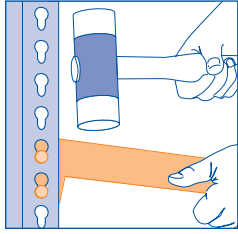
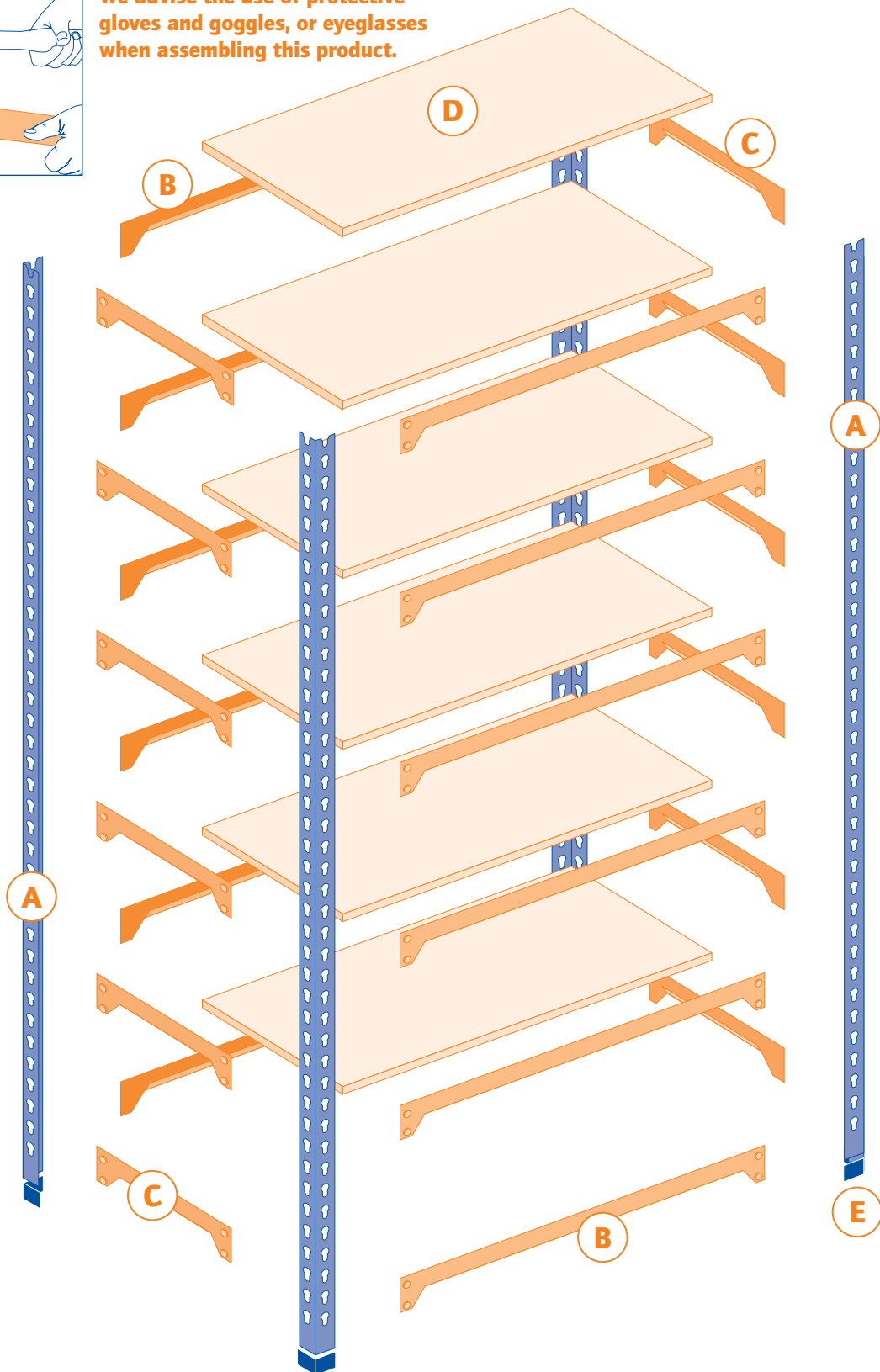


DOCUMENT STORAGE

Tools required: Rubber mallet



We advise the use of protective gloves and goggles, or eyeglasses when assembling this product.



BAY ASSEMBLY

- 1 Fit plastic feet to uprights **E**.
- 2 Assemble both ends first - **A** and **C**. Starting from the top allow 6 clear holes between each shelf support **C**.
- 3 Join both ends using front and rear beams **B**.
- 4 Add shelves **D**.

If you have any problems whatsoever please call **01452 223098** where a team of experts will be pleased to help.

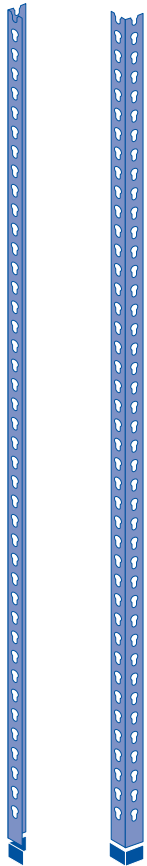
AIST002

IMPORTANT - ASSEMBLY INSTRUCTIONS

DOCUMENT STORAGE

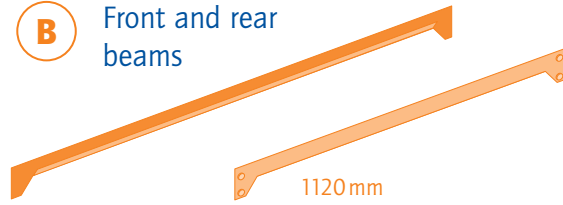
COMPONENTS

A Uprights
4 of



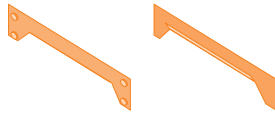
DS18 & DS36, 1600 mm
DS21, 1980 mm

B Front and rear
beams



1120 mm
DS18 & DS36 - 12 of
DS21 - 14 of

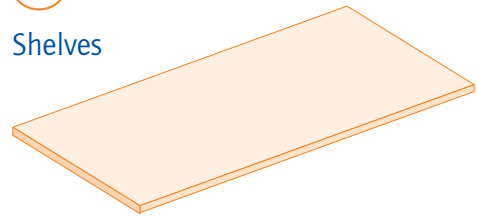
C Side beams



DS18, 455 mm - 12 of
DS36, 915 mm - 12 of
DS21, 455 mm - 14 of

D

Shelves



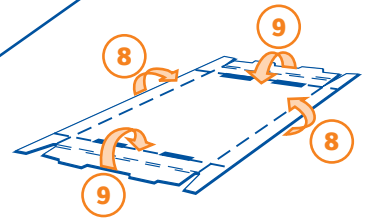
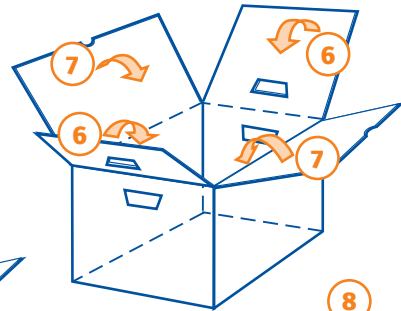
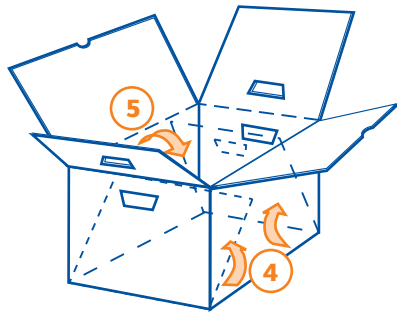
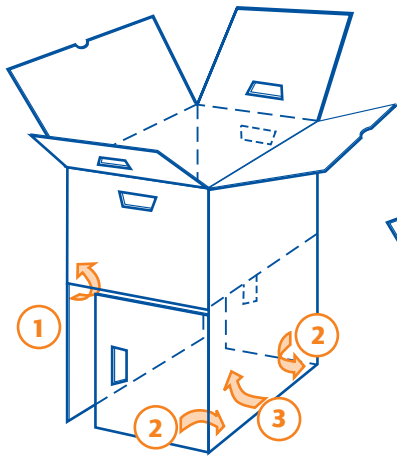
DS18 & DS21, 1120 mm x 455 mm - 6 of
DS36, 1120 mm x 915 mm - 7 of

F

Plastic feet
4 of



BOX ASSEMBLY



SAFETY

Keep heavier items on the bottom shelves		Keep your shelving dry	Do not climb on your shelving	Make sure it is on a level and even floor	Tie plates recommended with more than one bay

If you have any problems whatsoever please call **01452 223098** where a team of experts will be pleased to help.

AIST002

IMPORTANT - ASSEMBLY INSTRUCTIONS