

Tools required:
Rubber mallet

We advise the use of protective gloves and goggles, or eyeglasses when assembling this product.

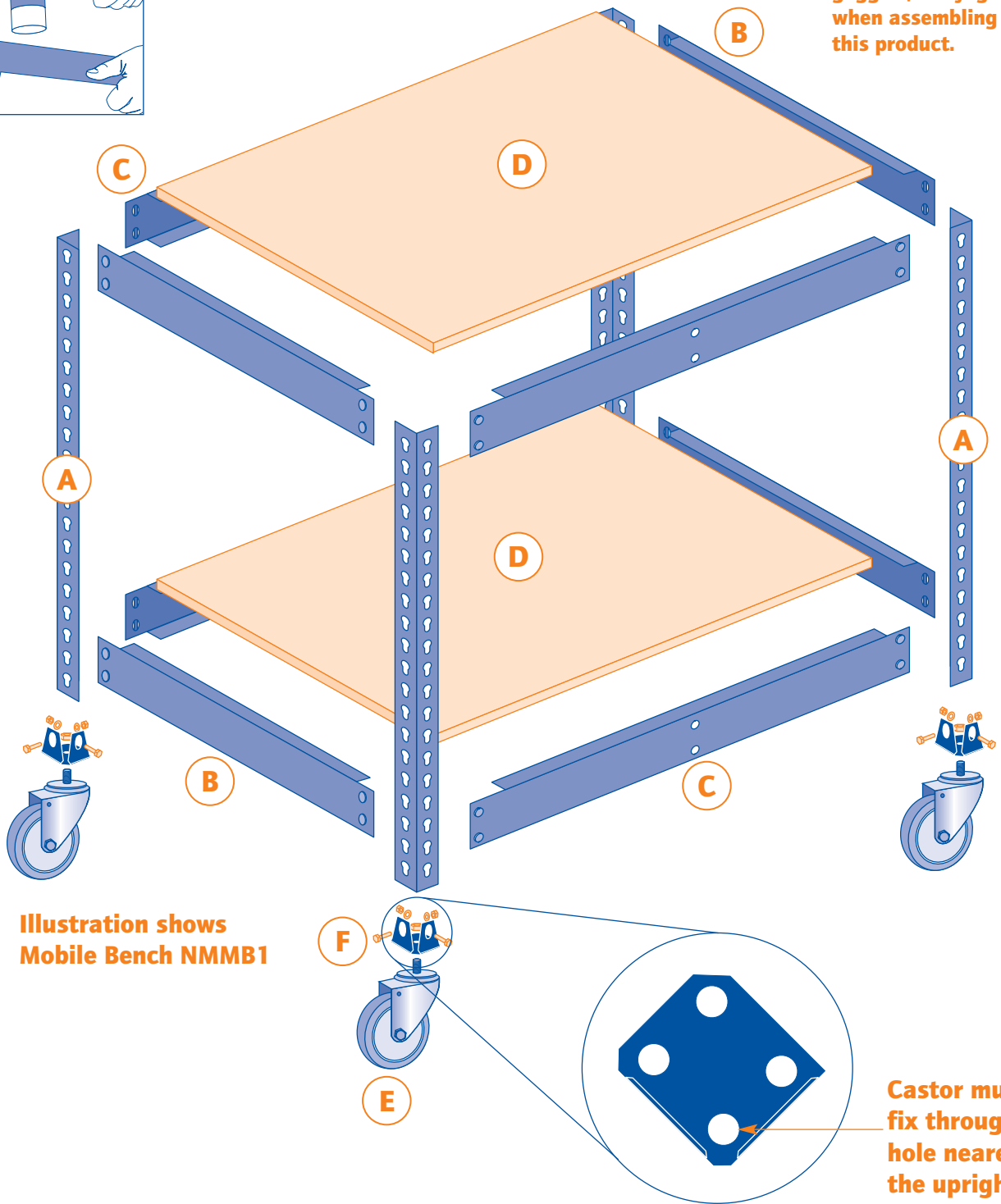


Illustration shows Mobile Bench NMMB1

Castor must fix through hole nearest the upright.

ASSEMBLY

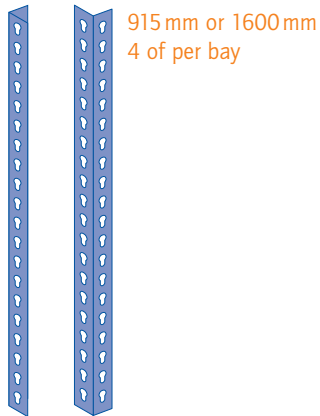
For Mobile Bench **NMMB1**

- 1 Fit castors **E** to uprights **A** using screws **F**.
- 2 Assemble both ends first - **A** and **B** starting from the bottom, allow 1 clear hole for the first side beam **B**. Fit the top side beams to the top holes of the uprights.
- 3 Tap together using rubber mallet.
- 4 Fit front and rear beams **C** to uprights **A** level with side beams **B**.
- 5 Position shelves **D** into place.

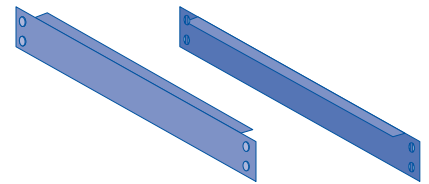
IMPORTANT - ASSEMBLY INSTRUCTIONS

COMPONENTS

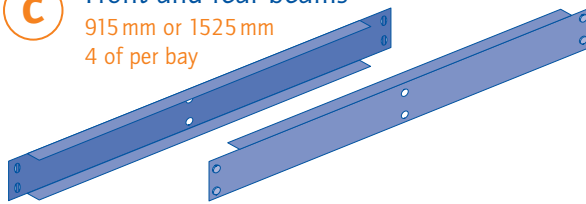
A Uprights



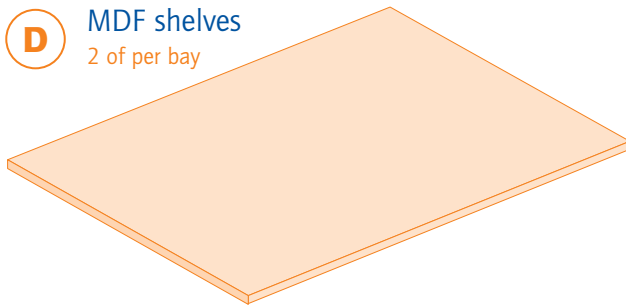
B Side beams
610 mm
4 of per bay



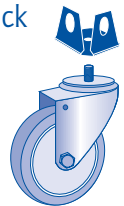
C Front and rear beams
915 mm or 1525 mm
4 of per bay



D MDF shelves
2 of per bay



E Castor pack
4 of per bay



F Screws and bolts
1 set per castor



SAFETY

<p>Keep heavier items on the bottom shelves</p>	<p>Keep your shelving dry</p>	<p>Do not climb on your shelving</p>	<p>Make sure it is on a level and even floor</p>

IMPORTANT - ASSEMBLY INSTRUCTIONS